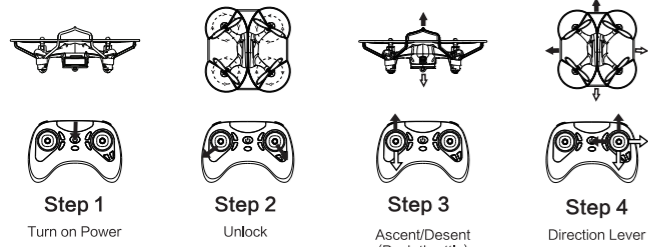


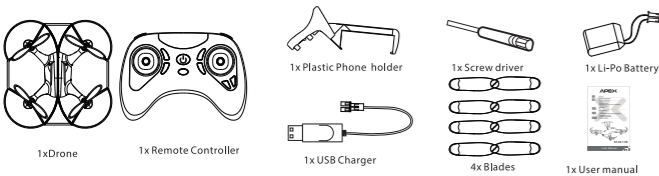
ATOYX Quick Start Guide



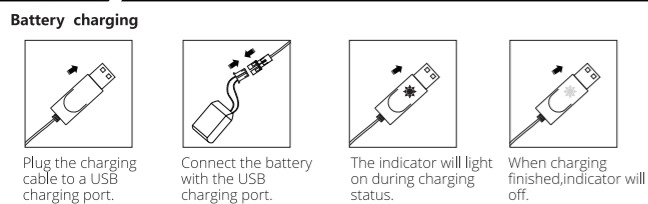
ATOYX Features

- Altitude hold
- Headless mode
- 3 Speeds adjustment
- 3D Flip
- One key return
- One key take off/landing
- Gravity sensor

ATOYX Standard components

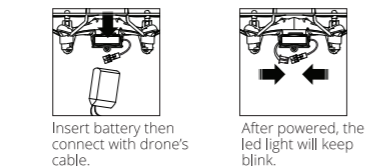


ATOYX Battery charging and installation



=1=

Battery installation

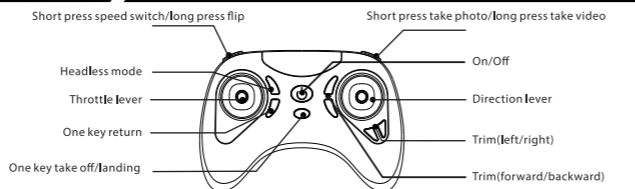


Notice

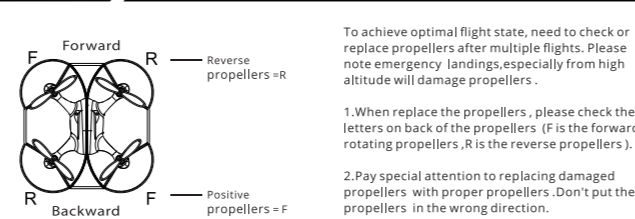
LED indicator			Charging specification		
light off ○	light on ☀	light blink ⚡	input	charging current	full voltage
charge completed	charging	Ready mode	5V	420-450 mA	4.2V ± 0.05V

Battery and charge specification			
battery type	battery specification	using time	charging time
Lithium batteries	3.7V 400mAh	drone flight time :6-8mins	about 50 mins(charging current approx 0.5A)

ATOYX Remote control function key description



ATOYX Replace Propellers



=2=

ATOYX Remote controller function instruction

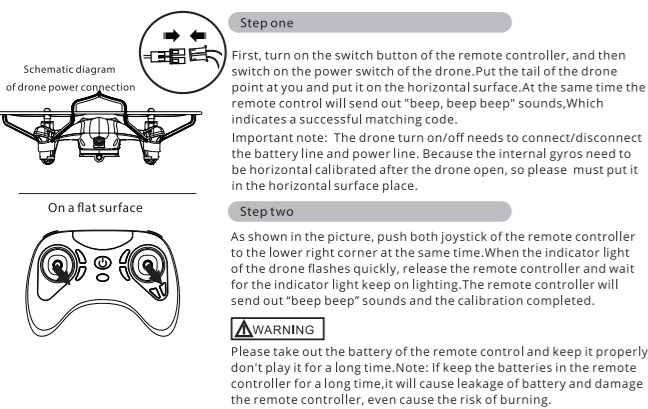
Turn on/ Match code	Light stable	Powered on: Step 1: Insert the Li-po battery the drone and connect the power cable, the drone indicator light will flash. Step 2: Install 2 AAA battery to the remote controller and long press the power button, at the same time the controller will send out "bi" sound twice, and the led light will change to light stable, then means the drone match code automatic successfully.
Unlock	Blades rotating	Unlock After the drone and the remote controller turn on and match code, push the throttle lever to left corner, push direction lever to the right corner (push them at the same time) to start the motor, the drone blades will be in rotating status, which means the drone unlocked successfully.
One button take off/ landing	Take off	After unlock the drone, press "One key take off/One key landing" button, drone will hover about two meters above the ground. Press again, drone will land automatically.
Throttle(Top position)	Ascent	Push the throttle lever up, drone will fly up.
Throttle(zero position)	Descent	Push the throttle lever down, drone will fly down.
Spin around	Turn left	Push the throttle lever to left, drone will turn left.
	Turn right	Push the throttle lever to right, drone will turn right.
Flight forward and backward	Fly forward	Push the direction lever up, drone will fly forward.
	Fly backward	Push the direction lever down, drone will fly backward.
Flight left/right	Left	Push the direction lever left, drone will fly left.
	Right	Push the direction lever right, drone will fly right.

=3=

Press the "Flip" button, the controller will beep.	Front flip	Long press the Stunt button, don't release the remote control to make a "bi..." sound, then push the direction bar. Front flip: move the direction lever forward. Back flip: move the direction lever backward.
Press the "Flip" button, the controller will beep.	Left flip	Long press the Stunt button, don't release the remote control to make a "bi..." sound then push the direction bar. Left flip: move the direction lever to left. Right flip: move the direction lever to right.
Speed switching	Low	Short press speed/ stunt button switch speed.
	Medium	1. speed (low speed): "bi" 1 time.
	Max	2. speed (medium speed): "bi" twice. 3. speed (high speed): "bi" 3 times. Recommended for beginners to use 1 speed (low speed) at first.
Headless mode		Press headless mode button, the headless mode will start up. The drone direction will follow the remote controller, not depend on nose direction.
One key return		Long press one key return button could make the drone return fast.
Fine tuning		Press "▲" "▼" "▶" "◀" button could fine tuning flight path.
Take photo / video	90° angle adjustment	Short press "Take picture/video" button to take photo, long press it to take video. Photos and videos will save in the app.

=4=

ATOYX Calibrate the drone



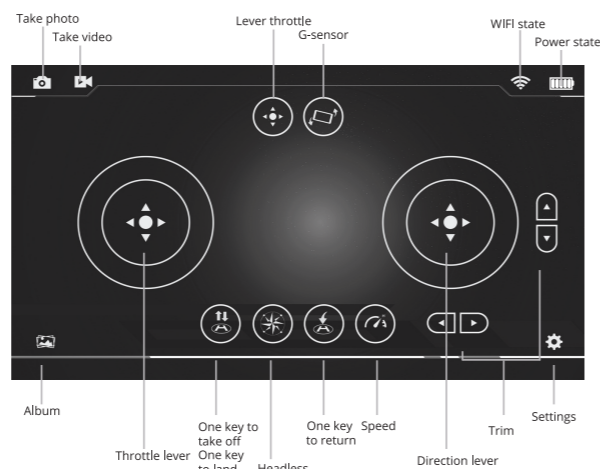
=5=

ATOYX App application

- APP download and installation
 - Android System
 - Search for the keyword 'AT-96' in (Android market or 91 Assistant) to download.
 - Or use a browser to scan a QR code to download
 - on Google play: search for the keyword 'AT-96' to download
- For IOS system
 - Please go to App store, enter the key word "AT-96" to download the app.
- App Operating instructions
 - After installing the APP on the phone, click enter and the following screen appears.



Android



2.The Wifi connection

- (1) please open your drone first and connect your mobile WIFI hotspot to AT-96_XXXXXX ".
- (2) Enter the APP. If the mobile APP is successfully connected to the drone, you can see real-time image transmission in the APP. It can be controlled remotely by a mobile phone.
- (3) The remote controller is invalid when the mobile phone controls the drone; Mobile phone control is invalid when the remote controller controls the drone.

3. Throttle lever
Turn on the Throttle lever, and the drone indicator light will be always on. At this time, you can fly through the virtual handle.

4. Please refer to P4 for throttle and direction control.

5. Take pictures
Trigger the APP photo function:
Short press the remote controller also can take photos.

6. Camera shooting
Trigger the APP camera shooting function, the camera shooting starts, and trigger the camera again, it will stop camera shooting.
Long press the remote controller camera function can also be used for camera shooting.

7. Gravity induction
Trigger the gravity sensor, which controls the drone's direction by sensing the earth's gravity through the phone's built-in sensor chip.

=6=

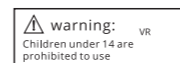
- WIFI state
This icon displays the signal strength of the drone connected to the remote control.
- Photo album
Click on this to view the photos and recorded video you take.

ATOYX Problem shooting

Problem	Causes	Solutions
1 Turn on the drone, LED blinks, while the drone has no responding to all commands	Pair between drone and controller failed	(please refer to the frequency alignment of remote controller and receiver in P3)
2 Turn on the drone, the drone has no reaction to the commands	The battery died	Charge the drone
3 Blades keep moving after landing	Throttle lever is not at the zero position	Put the throttle lever to zero position
4 Blades keep moving, while the drone can not take off	1. Blades may install wrong 2. No enough power	1. Change the blades 2. Charge the drone
5 After trimming, drone keeps spin, and the speed of blades is different	1. Blades may install wrong 2. Blades get damaged 3. Calibration fail	1. Install the blades 2. Replace the blades 3. Refer to p3 for calibration
6 The drone can not take off after drop	1. Blades are getting lose 2. Blades get damaged	1. Tighten the blades 2. Replace the blades

=7=

FCCID:2AQT5-GD90C-RD



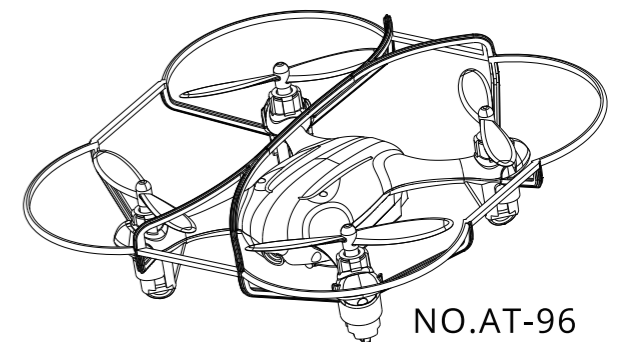
MADE IN CHINA



AT96IMEN02

ATOYX

- 1-2 Important statement
 - Features
 - Standard components
 - Battery charging and install
- 2 Remote control function key description
 - Replace Propellers
- 3-4 Remote control instructions
- 5-7 Calibrating the drone
 - App application
- 7 Problem shooting



NO.AT-96

User Manual